

INSTALLATION INSTRUCTIONS



Infection Control Faucet

Installation

Thank you for choosing the Muirsis Infection Control faucet. We are dedicated to providing you with the most advanced technology and superior performance. This product is designed to bring you years of trouble free operation.

Please read the entire installation manual before proceeding. Contact our customer service department if you have any questions or concerns about your Muirsis Infection Control faucet.

Features:

Type: Electronic touch free healthcare faucet • Two Hole Installation • Optional Single Hole Installation with Deck Plate

Faucet Body: Solid brass construction

Control Panel: Solid brass construction

Power: AC powered / 4 – AA back up batteries*

Control Box: Integrated check valves, anti-scalding safety device and motorized mixing valve

Aerator: 1.5GPM @ 60PSI • 5.7lpm @414kPa

Installation: Basic tools required

*If the AC adapter is not used, please install 4 – AA batteries to each side of the control box

Specifications:

Water Pressure	20 PSI to 125 PSI
Water Inlet	½" Connection
Operating Temperature	Full Cold to 120°F*
Sensor Distance	½ Inch
Response Time	0.4 seconds
Shut off Time	0.6 seconds
Warranty	3 Year Limited Warranty

*Anti-scalding safety feature limits the maximum water temperature to 120°F

Certified with the following standards: ADA compliant • ASME112.18 / CSA B125.1 • California AB1953 / Vermont S152 • ANSI / NSF61-9 • ASSE 1070 • EPA Water Sense • Meets Cal Green standards

Package Contents:

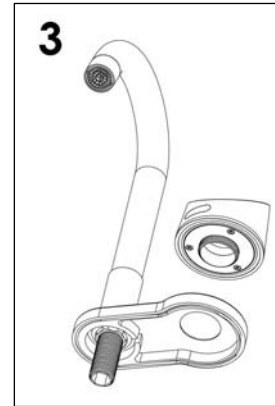
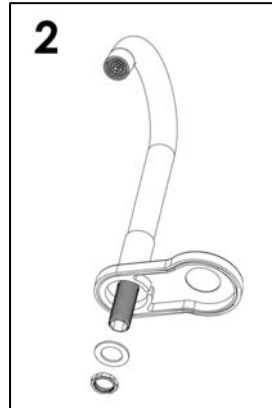
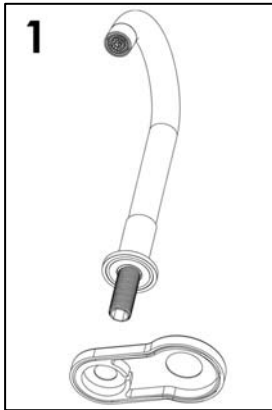
- Faucet Body and Control Panel
- Control Box with mounting screws
- Vandal Proof Aerator Key
- AC adapter and 8 – AA batteries
- 24" braided water supply hose
- Optional Deck Plate for single-hole installation

If you are missing any parts, please contact a Muirsis Medical Customer Support representative at 714-579-1555 or customersupport@muirsismedical.com

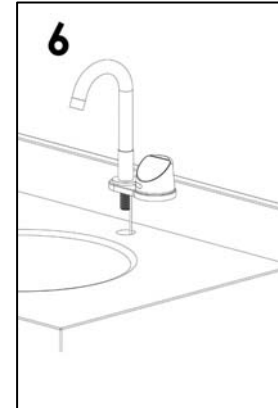
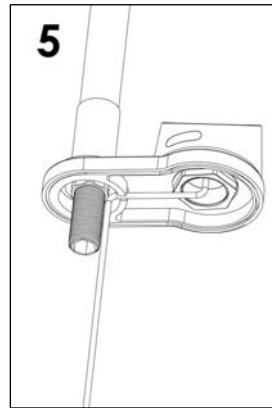
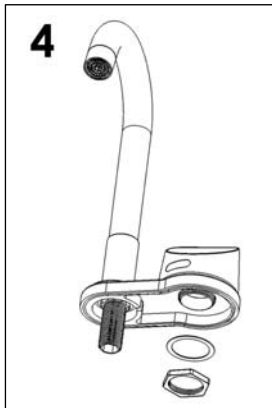
Step One: Faucet Installation:

The Muirsis faucet system can be installed as a single-hole installation or a two-hole installation. For a single-hole installation, follow the instructions below. For the two-hole installation procedure, please proceed to the two-hole installation steps.

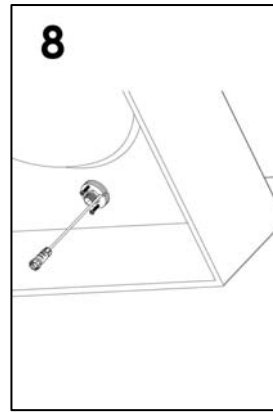
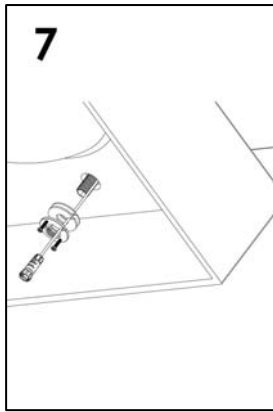
➤ Single-Hole Installation:



1. Place the faucet on the deck plate.
2. Install the washer and nut to secure the faucet to the deck plate. The nut must be tight so the faucet does not move. Make sure the faucet is facing the front of the deck plate.
3. Place the control panel on the deck plate. Make sure the control panel is facing the front of the deck plate.

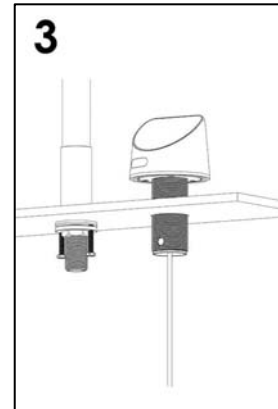
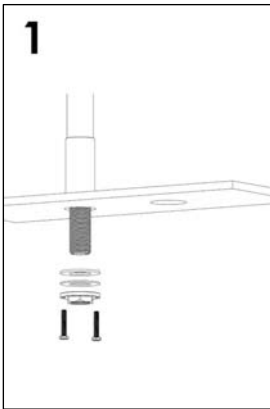


4. Install the washer and nut to secure the control panel to the deck plate.
5. Guide the control panel wire through the guides on the bottom of the deck plate.
6. Place the deck plate assembly on the countertop. Make sure the control panel wire is guided through the opening.

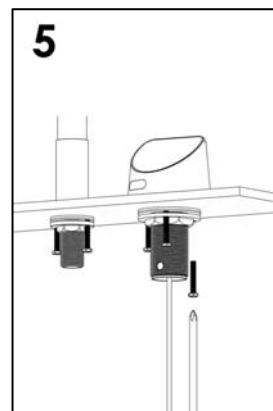
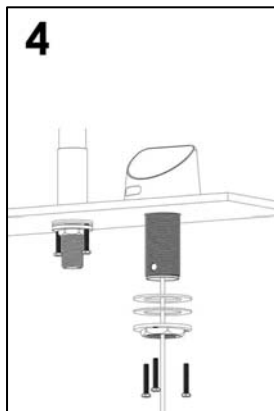


7. Install the rubber washer, metal washer and nut. Make sure the cuts line up with the control panel wire.
8. Tighten the two screws on the nut with a screwdriver. Make sure the wire from the control panel is not pinched.

➤ **Two-Hole Installation:**

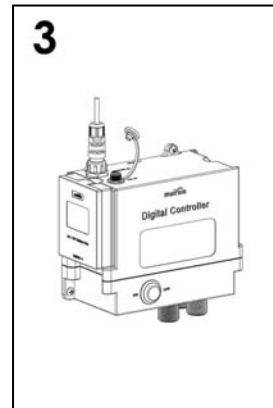
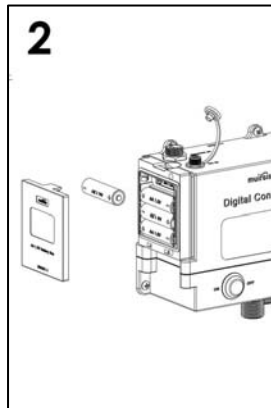


1. Place the faucet on the countertop. Install the rubber washer, metal washer and nut.
2. Tighten the two screws on the nut with a screwdriver.
3. Place the control panel into the second hole on the countertop.

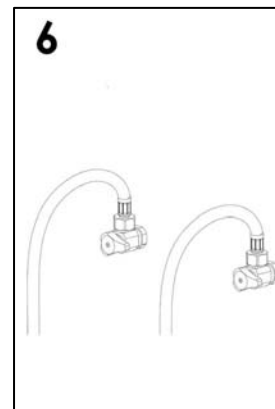
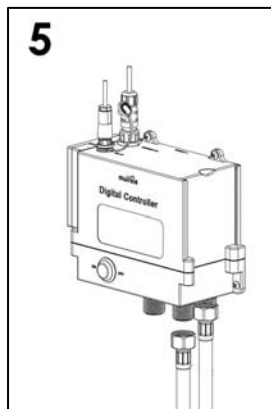


4. Install the rubber washer, metal washer and nut.
5. Tighten the three screws on the nut with a screwdriver.

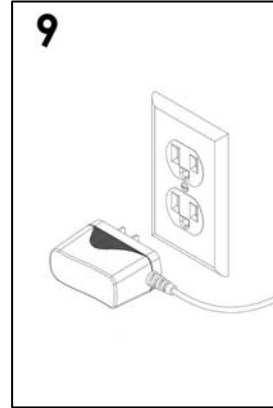
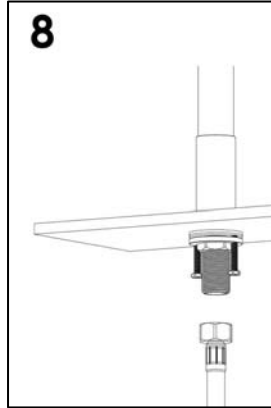
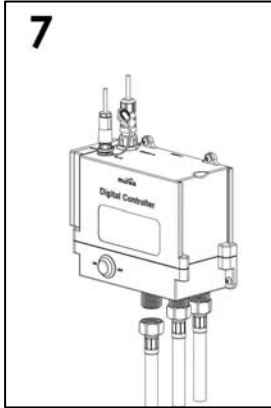
Step Two: Control Box Installation:



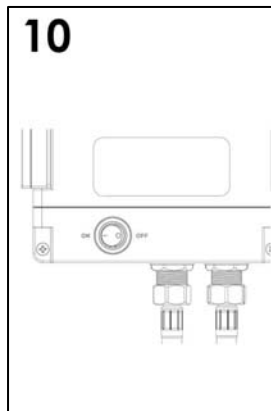
1. Mount the control box underneath the countertop. Use the four screws supplied with the package. If mounting the control box to drywall, use the supplied drywall anchors.
2. Insert 4 – AA batteries into one of the battery boxes.
3. Connect the wire from the control panel to the “Sensor In” connector.



4. Connect the AC adaptor to the “DC In” connector. **NOTE:** If you do not plan on using the AC adaptor, please install 8 – AA batteries. Populate both the left and right side battery boxes.
5. Connect the cold water supply hose to the cold water inlet. Connect the hot water supply hose to the hot water inlet.
6. Connect the opposite ends of the supply lines to the main water supply valves.



7. Connect the water supply hose to the control box.
8. Connect the other end to the faucet.
9. Plug in the AC adapter to the wall outlet.



10. Power on the unit.

The installation is now complete. Turn on the main water supply valves. Operate the faucet and check for leaks. If water leaks are present, tighten the hoses that are leaking. Be careful not to over tighten the water supply hoses. Doing so may damage the washers inside the supply hoses.

Please read the Muirsis operating manual to fully understand all the functions available on the infection control faucet.

Thank you for purchasing a Muirsis Infection Control faucet. We hope you are completely satisfied with the product. If you have any questions or comments, please do not hesitate to contact us immediately.

For helpful tips and videos, please visit the installation section on the Muirsis Medical website:

<http://muirsismedical.com/installation.html>



2861 Saturn Street, Suite A, Brea, CA 92821

© Muirsis Inc. 2014